

自伐型林業の技術の継承・移転・交流と 中山間地域での新たなライフスタイル

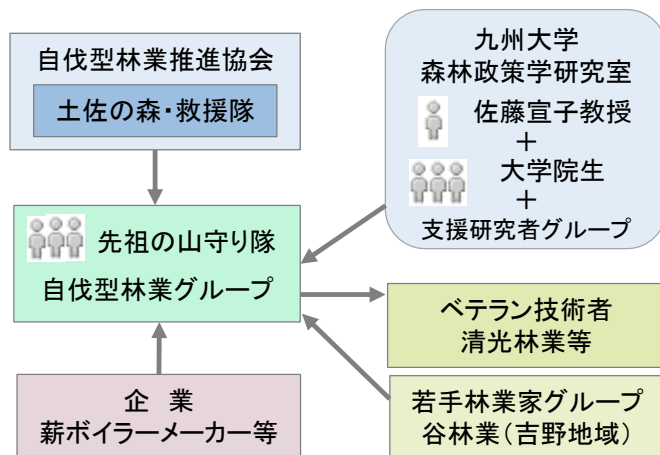
九州大学大学院農学研究院 教授 佐藤宣子
NPO 法人持続可能な環境共生林業を実現する自伐型林業推進協会



研究・活動の背景と目的

- ・小規模・低投資から始められる「自伐型林業」が注目され、若手が「先祖の山守り隊」として参集している。メンバーの中には、副業にとどまらず、自伐林業を核にしたライフスタイル構築の模索しているものが多い。
- ・自伐型林業の技術普及、およびフィールド確保のための社会関係の構築が課題となっている。
- ①若い世代の自伐型林業参入の社会・経済的条件を明らかにし、②「先祖の山守り隊」による自伐型林業の技術普及（継承・移転・交流）を図り、③自伐林業支援の意義と政策課題を発信する。

実施体制



内容と成果

全国各地の講習開催

- ・全国10ヶ所以上で「壊れない道づくり」講習および講師による山林視察を開催（一部自費開催）。



集中合宿の開催 (&地域間交流)

- ・奈良県吉野地域で5日間の集中合宿を開催（11/24～）。第二回目は技術レベル別に3グループにわかれた合宿（12/7～）、そして第三回目は造材メインの研修（5月16日～）。
- ・吉野地域の若手林業家らと交流会を開催。参加した事業者らと協業の可能性が出た。



実態調査

- ・高知県本山町の個別調査および集中合宿での参加者と講師へ聞き取り調査を行った。
- ・地元の既存団体との協力体制や講師の思いなどを聞くことができた。



会員間の情報交換

- ・フェイスブックにより、会員でノウハウを共有し、相談する関係を構築。

取材・発信

- ・シンポジウムを開催し約180名が参加。その模様や合宿の光景をまとめてネット番組で放送。
- ・自伐型林業家モデルの記事を掲載。



今後の展開

- ・各地の講習会の継続実施。
- ・全国で続々と生まれている自伐型林家初級者が講師を呼べる仕組みづくり（ネット講習含）。
- ・インターネット番組の撮影・編集と配信。
- ・大規模山林所有者と新たな若手施業者とのマッチング。

Succession, Transfer and Exchange of Self-Employed Timber Harvesting Techniques and New Lifestyles in Mountainous Areas

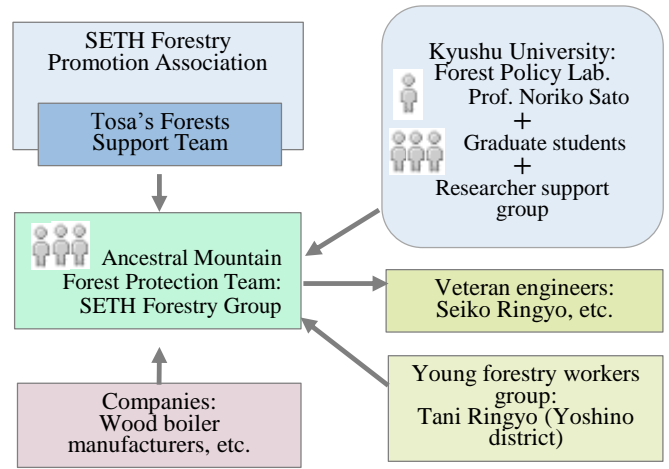
Noriko Sato, Professor, Faculty of Agriculture, Kyushu University
Self-Employed Timber Harvesting Promotion Association for Sustainable and Environmentally Symbiotic Forestry



Background and Objectives of Research/Activities

- Self-Employed Timber Harvesting (SETH: “*Jibatsu*”) Forestry began on a small scale and with small investment has garnered attention. Youth are participating in this project as protectors of ancestral mountain forests. Many members are looking for creation of a lifestyle centered around SETH forestry, despite it being a second job.
 - Challenge is to build social relationships for spreading SETH techniques and securing the field.
- Identify social and economic conditions for youth participation in SETH forestry,
 - popularization (succession, transfer and exchange) of owner’s self-management forestry technologies through the team to protect ancestral mountain forests, and
 - the sharing of information on policy issues and the importance of supporting owner’s self-management forestry.

Implementation System



Details and Outcomes

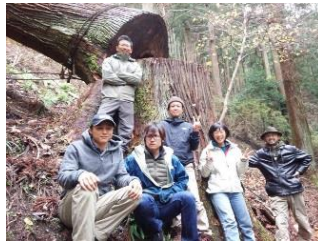
Presentations nationwide

- Held presentations at ten locations across Japan on creating roads that will not break and organized mountain forest visits by speakers (partly held at private expense)



Intensive training camps (& inter-rural interaction)

- 5-day intensive training camp held in Yoshino, Nara Prefecture (Nov. 24 onward). The second training camp will comprise of three groups broken down by technical level (Dec. 7 onward).
- Networking session held with youth forestry workers of Yoshino. Possibility for collaboration with participating businesses emerged.



Field survey

- carried out in Motoyama Town, Kochi Prefecture, and a field survey was held on members and speakers at the intensive training camp
- Able to gather info about speakers commitment and the collaborative system used by local groups

Information sharing among members

- Facebook used to share know-how among members and build collaborative relationships



Coverage/sharing

- Approximately 180 people participated in the symposium. The symposium and scenes from the training camp were consolidated and broadcast through an Internet program.
- An article on the SETH forestry model was published.



Future Plans

- Continue to hold presentations across Japan
- Establish a framework that allows beginners at SETH forestry, who are springing up in all parts of Japan, to invite lecturers (including online seminars).
- Shoot, edit, and distribute an Internet program.
- Match up large-scale forest owners with new and young practitioners of SETH forestry.